

# Lower Thames Crossing

## 6.2 Environmental Statement Figures

### Figure 7.17 - Representative Viewpoints - Winter and Summer Views (8 of 8)

APFP Regulation 5(2)(a)  
Infrastructure Planning  
(Applications: Prescribed Forms and Procedure)  
Regulations 2009  
Volume 6

**DATE:** October 2022

Planning Inspectorate Scheme Ref: TR010032  
Application Document Ref: TR010032/APP/6.2

**VERSION:** 1.0



P01	S8	05/08/2022	First Issued	BB	HP	SK
Rev	Status	Rev. Date	Purpose of revision	Drawn	Chck'd	Apprv'd

For location see Figure 7.16 - Visual Effects Drawing with Representative Viewpoint Locations		<b>Winter Viewpoint:</b> Date and Time:	N-Dep-RV-01 16/02/2022 12:29
Camera:	Canon EOS 6D MkII	FL, Max Aperture:	50mm, 1.75
Lens:	Canon EF 50mm f/1.8 STM	Viewpoint Ground Height:	77m AOD
		Viewpoint Grid Reference:	565938E, 169811N
		Distance to Order Limits:	0m
		View Direction (Centre of View):	WNW



**LOWER THAMES CROSSING**  
5th Floor Beaufort House  
15 St Botolph Street  
London EC3A 7DT

Project	LOWER THAMES CROSSING
Drawing title	Figure 7.17 Representative Viewpoints - Winter Views Viewpoint N-Dep-RV-01 Sheet 1 of 2

Drawn	BB	Date - 05/08/2022	Status	Revision
Checked	HP	Date - 05/08/2022	S8	P01
Approved	SK	Date - 05/08/2022	Application Document No. TR010032/APP/6.2	
Drawing number		HE540039-CJV-ELS-SZP_ZZ000000_Z-DR-LV-00400		



AREA LEFT INTENTIONALLY BLANK

P01	S8	05/08/2022	First Issued	BB	HP	SK
Rev	Status	Rev. Date	Purpose of revision	Drawn	Chck'd	Apprv'd

For location see Figure 7.16 - Visual Effects Drawing with Representative Viewpoint Locations		<b>Winter Viewpoint:</b> Date and Time:	N-Dep-RV-01 16/02/2022 12:29	FL, Max Aperture:	50mm, 1.75	Distance to Order Limits:	0m
Camera:	Canon EOS 6D MkII	Viewpoint Ground Height:	77m AOD	View Direction (Centre of View):	WNW		
Lens:	Canon EF 50mm f/1.8 STM	Viewpoint Grid Reference:	565938E, 169811N				



**LOWER THAMES CROSSING**  
5th Floor Beaufort House  
15 St Botolph Street  
London EC3A 7DT

Project	LOWER THAMES CROSSING
Drawing title	Figure 7.17 Representative Viewpoints - Winter Views Viewpoint N-Dep-RV-01 Sheet 2 of 2

Drawn	BB	Date - 05/08/2022	Status	S8	Revision	P01
Checked	HP	Date - 05/08/2022	Application Document No. TR010032/APP/6.2			
Approved	SK	Date - 05/08/2022	Drawing number <b>HE540039-CJV-ELS-SZP_ZZ000000_Z-DR-LV-00401</b>			



P01	S8	05/08/2022	First Issued	BB	HP	SK
Rev	Status	Rev. Date	Purpose of revision	Drawn	Chck'd	Apprv'd

For location see Figure 7.16 - Visual Effects Drawing with Representative Viewpoint Locations

Camera: Canon EOS 6D MkII  
Lens: Canon EF 50mm f/1.8 STM

**Winter Viewpoint:** N-Dep-RV-02  
Date and Time: 16/02/2022 16:15

FL, Max Aperture: 50mm, 1.75  
Viewpoint Ground Height: 89m AOD  
Viewpoint Grid Reference: 568962E, 170553N

Distance to Order Limits: 0m  
View Direction (Centre of View): NW



**LOWER THAMES CROSSING**  
5th Floor Beaufort House  
15 St Botolph Street  
London EC3A 7DT

Project: LOWER THAMES CROSSING  
Drawing title: Figure 7.17  
Representative Viewpoints - Winter Views  
Viewpoint N-Dep-RV-02  
Sheet 1 of 1

Drawn	BB	Date	- 05/08/2022	Status	S8	Revision	P01
Checked	HP	Date	- 05/08/2022	Application Document No. TR010032/APP/6.2			
Approved	SK	Date	- 05/08/2022	Drawing number HE540039-CJV-ELS-SZP_ZZ000000_Z-DR-LV-00402			



AREA LEFT INTENTIONALLY BLANK

<table border="1"> <tr> <td>P01</td> <td>S8</td> <td>05/08/2022</td> <td>First Issued</td> </tr> <tr> <td>Rev</td> <td>Status</td> <td>Rev. Date</td> <td>Purpose of revision</td> </tr> </table>				P01	S8	05/08/2022	First Issued	Rev	Status	Rev. Date	Purpose of revision	<table border="1"> <tr> <td>BB</td> <td>HP</td> <td>SK</td> <td></td> </tr> <tr> <td>Drawn</td> <td>Chck'd</td> <td>Apprv'd</td> <td></td> </tr> </table>				BB	HP	SK		Drawn	Chck'd	Apprv'd		<p>For location see Figure 7.16 - Visual Effects Drawing with Representative Viewpoint Locations</p> <p><b>Winter Viewpoint:</b> N-Dep-RV-03 Date and Time: 16/02/2022 14:49</p> <p>Camera: Canon EOS 6D MkII Lens: Canon EF 50mm f/1.8 STM</p> <p>FL, Max Aperture: 50mm, 1.75 Viewpoint Ground Height: 63m AOD Viewpoint Grid Reference: 569376E, 171126N</p> <p>Distance to Order Limits: 0m View Direction (Centre of View): SE</p>				<p>Client</p> 		<p><b>LOWER THAMES CROSSING</b></p> <p>5th Floor Beaufort House 15 St Botolph Street London EC3A 7DT</p>		<p>Project LOWER THAMES CROSSING</p> <p>Drawing title Figure 7.17 Representative Viewpoints - Winter Views Viewpoint N-Dep-RV-03 Sheet 1 of 1</p>		<table border="1"> <tr> <td>Drawn</td> <td>BB</td> <td>Date - 05/08/2022</td> <td>Status</td> </tr> <tr> <td>Checked</td> <td>HP</td> <td>Date - 05/08/2022</td> <td>S8</td> </tr> <tr> <td>Approved</td> <td>SK</td> <td>Date - 05/08/2022</td> <td>Application Document No. TR010032/APP/6.2</td> </tr> </table>		Drawn	BB	Date - 05/08/2022	Status	Checked	HP	Date - 05/08/2022	S8	Approved	SK	Date - 05/08/2022	Application Document No. TR010032/APP/6.2	<p>Revision P01</p>	
P01	S8	05/08/2022	First Issued																																														
Rev	Status	Rev. Date	Purpose of revision																																														
BB	HP	SK																																															
Drawn	Chck'd	Apprv'd																																															
Drawn	BB	Date - 05/08/2022	Status																																														
Checked	HP	Date - 05/08/2022	S8																																														
Approved	SK	Date - 05/08/2022	Application Document No. TR010032/APP/6.2																																														
<p>Drawing number HE540039-CJV-ELS-SZP_ZZ000000_Z-DR-LV-00403</p>																																																	



P01	S8	05/08/2022	First Issued	BB	HP	SK
Rev	Status	Rev. Date	Purpose of revision	Drawn	Chck'd	Apprv'd

For location see Figure 7.16 - Visual Effects Drawing with Representative Viewpoint Locations		<b>Winter Viewpoint:</b> N-Dep-RV-04	Date and Time: 16/02/2022 15:02
Camera: Canon EOS 6D MkII	FL, Max Aperture: 50mm, 1.75	Distance to Order Limits: 85m	View Direction: SSW
Lens: Canon EF 50mm f/1.8 STM	Viewpoint Ground Height: 52m AOD	Viewpoint Grid Reference: 569720E, 171288N	



**LOWER THAMES CROSSING**  
 5th Floor Beaufort House  
 15 St Botolph Street  
 London EC3A 7DT

Project	LOWER THAMES CROSSING
Drawing title	Figure 7.17 Representative Viewpoints - Winter Views Viewpoint N-Dep-RV-04 Sheet 1 of 1

Drawn	BB	Date - 05/08/2022	Status	S8	Revision	P01
Checked	HP	Date - 05/08/2022	Application Document No. TR010032/APP/6.2			
Approved	SK	Date - 05/08/2022	Drawing number			
HE540039-CJV-ELS-SZP_ZZ000000_Z-DR-LV-00404						



AREA LEFT INTENTIONALLY BLANK

P01	S8	05/08/2022	First Issued	BB	HP	SK
Rev	Status	Rev. Date	Purpose of revision	Drawn	Chck'd	Apprv'd

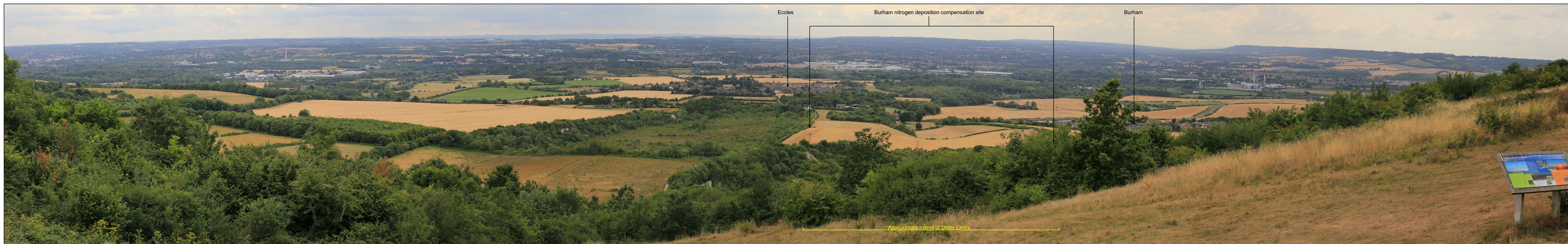
For location see Figure 7.16 - Visual Effects Drawing with Representative Viewpoint Locations		<b>Summer Viewpoint:</b> Date and Time:	N-Dep-RV-05 26/07/2022 13:23	FL, Max Aperture:	50mm, 1.75	Distance to Order Limits:	0m
Camera:	Canon EOS 6D MkII	Viewpoint Ground Height:	62m AOD	View Direction (Centre of View):	N		
Lens:	Canon EF 50mm f/1.8 STM	Viewpoint Grid Reference:	573530E, 161432N				



**LOWER THAMES CROSSING**  
5th Floor Beaufort House  
15 St Botolph Street  
London EC3A 7DT

Project	LOWER THAMES CROSSING
Drawing title	Figure 7.17 Representative Viewpoints - Summer Views Viewpoint N-Dep-RV-05 Sheet 1 of 1

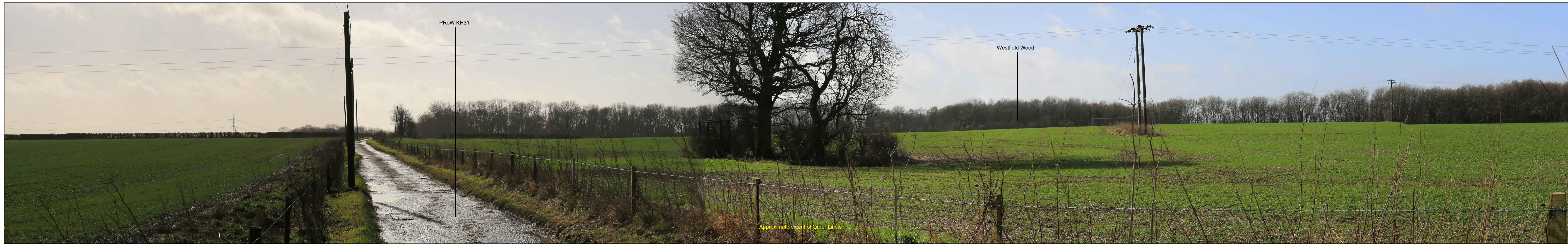
Drawn	BB	Date - 05/08/2022	Status	S8	Revision	P01
Checked	HP	Date - 05/08/2022				
Approved	SK	Date - 05/08/2022	Application Document No. TR010032/APP/6.2			
Drawing number		HE540039-CJV-ELS-SZP_ZZ000000_Z-DR-LV-00405				



AREA LEFT INTENTIONALLY BLANK

For location see Figure 7.16 - Visual Effects Drawing with Representative Viewpoint Locations				<b>Summer Viewpoint:</b> Date and Time: N-Dep-RV-06 26/07/2022 14:40		Distance to Order Limits: 695m View Direction (Centre of View): SW		Client 	<b>LOWER THAMES CROSSING</b> 5th Floor Beaufort House 15 St Botolph Street London EC3A 7DT	Project LOWER THAMES CROSSING Drawing title Figure 7.17 Representative Viewpoints - Summer Views Viewpoint N-Dep-RV-06 Sheet 1 of 1	Drawn BB Date - 05/08/2022	Status S8	Revision P01
Camera: Canon EOS 6D MkII Lens: Canon EF 50mm f/1.8 STM	FL, Max Aperture: 50mm, 1.75	Viewpoint Ground Height: 180m AOD Viewpoint Grid Reference: 574308E, 162146N	Application Document No. TR010032/APP/6.2		Drawing number HE540039-CJV-ELS-SZP_ZZ000000_Z-DR-LV-00406								
P01 S8 05/08/2022 First Issued	BB HP SK	Rev Status Rev. Date Purpose of revision Drawn Chck'd Apprv'd											





P01	S8	05/08/2022	First Issued	BB	HP	SK
Rev	Status	Rev. Date	Purpose of revision	Drawn	Chck'd	Apprv'd

For location see Figure 7.16 - Visual Effects Drawing with Representative Viewpoint Locations		<b>Winter Viewpoint:</b> Date and Time:	N-Dep-RV-07 16/02/2022 11:15
Camera:	Canon EOS 6D MkII	FL, Max Aperture:	50mm, 1.75
Lens:	Canon EF 50mm f/1.8 STM	Viewpoint Ground Height:	186m AOD
		Viewpoint Grid Reference:	576150E, 161385N
		Distance to Order Limits:	0m
		View Direction (Centre of View):	SSW



**LOWER THAMES CROSSING**  
5th Floor Beaufort House  
15 St Botolph Street  
London EC3A 7DT

Project	LOWER THAMES CROSSING
Drawing title	Figure 7.17 Representative Viewpoints - Winter Views Viewpoint N-Dep-RV-07 Sheet 1 of 2

Drawn	BB	Date	- 05/08/2022	Status	S8	Revision	P01
Checked	HP	Date	- 05/08/2022	Application Document No. TR010032/APP/6.2			
Approved	SK	Date	- 05/08/2022	Drawing number			
HE540039-CJV-ELS-SZP_ZZ000000_Z-DR-LV-00407							



AREA LEFT INTENTIONALLY BLANK

P01	S8	05/08/2022	First Issued	BB	HP	SK
Rev	Status	Rev. Date	Purpose of revision	Drawn	Chck'd	Apprv'd

For location see Figure 7.16 - Visual Effects Drawing with Representative Viewpoint Locations		<b>Winter Viewpoint:</b> Date and Time:	N-Dep-RV-07 16/02/2022 11:15
Camera:	Canon EOS 6D MkII Lens: Canon EF 50mm f/1.8 STM	FL, Max Aperture:	50mm, 1.75
Viewpoint Ground Height:	188m AOD	Distance to Order Limits:	0m
Viewpoint Grid Reference:	576150E, 161385N	View Direction (Centre of View):	SSW



**LOWER THAMES CROSSING**  
5th Floor Beaufort House  
15 St Botolph Street  
London EC3A 7DT

Project	LOWER THAMES CROSSING
Drawing title	Figure 7.17 Representative Viewpoints - Winter Views Viewpoint N-Dep-RV-07 Sheet 2 of 2

Drawn	BB	Date - 05/08/2022	Status	S8	Revision	P01
Checked	HP	Date - 05/08/2022	Application Document No. TR010032/APP/6.2			
Approved	SK	Date - 05/08/2022	Drawing number <b>HE540039-CJV-ELS-SZP_ZZ000000_Z-DR-LV-00408</b>			



P01	S8	05/08/2022	First Issued	BB	HP	SK
Rev	Status	Rev. Date	Purpose of revision	Drawn	Chck'd	Apprv'd

For location see Figure 7.16 - Visual Effects Drawing with Representative Viewpoint Locations		<b>Winter Viewpoint:</b> N-Dep-RV-08	Date and Time: 16/02/2022 09:49
Camera: Canon EOS 6D MkII	FL, Max Aperture: 50mm, 1.75	Distance to Order Limits: 0m	View Direction (Centre of View): ENE
Lens: Canon EF 50mm f/1.8 STM	Viewpoint Ground Height: 191m AOD	Viewpoint Grid Reference: 576185E, 160855N	



**LOWER THAMES CROSSING**  
 5th Floor Beaufort House  
 15 St Botolph Street  
 London EC3A 7DT

Project	LOWER THAMES CROSSING
Drawing title	Figure 7.17 Representative Viewpoints - Winter Views Viewpoint N-Dep-RV-08 Sheet 1 of 2

Drawn	BB	Date - 05/08/2022	Status	S8	Revision	P01
Checked	HP	Date - 05/08/2022	Application Document No. TR010032/APP/6.2			
Approved	SK	Date - 05/08/2022	Drawing number			
HE540039-CJV-ELS-SZP_ZZ000000_Z-DR-LV-00409						



AREA LEFT INTENTIONALLY BLANK

P01	S8	05/08/2022	First Issued	BB	HP	SK
Rev	Status	Rev. Date	Purpose of revision	Drawn	Chck'd	Apprv'd

For location see Figure 7.16 - Visual Effects Drawing with Representative Viewpoint Locations		<b>Winter Viewpoint:</b> Date and Time:	N-Dep-RV-08 16/02/2022 09:49	FL, Max Aperture:	50mm, 1.75	Distance to Order Limits:	0m
Camera:	Canon EOS 6D MkII	Viewpoint Ground Height:	191m AOD	View Direction (Centre of View):	ENE		
Lens:	Canon EF 50mm f/1.8 STM	Viewpoint Grid Reference:	576185E, 160855N				



**LOWER THAMES CROSSING**  
5th Floor Beaufort House  
15 St Botolph Street  
London EC3A 7DT

Project	LOWER THAMES CROSSING
Drawing title	Figure 7.17 Representative Viewpoints - Winter Views Viewpoint N-Dep-RV-08 Sheet 2 of 2

Drawn	BB	Date - 05/08/2022	Status	S8	Revision	P01
Checked	HP	Date - 05/08/2022	Application Document No. TR010032/APP/6.2			
Approved	SK	Date - 05/08/2022	Drawing number			
HE540039-CJV-ELS-SZP_ZZ000000_Z-DR-LV-00410						



AREA LEFT INTENTIONALLY BLANK

P01	S8	05/08/2022	First Issued	BB	HP	SK
Rev	Status	Rev. Date	Purpose of revision	Drawn	Chck'd	Apprv'd

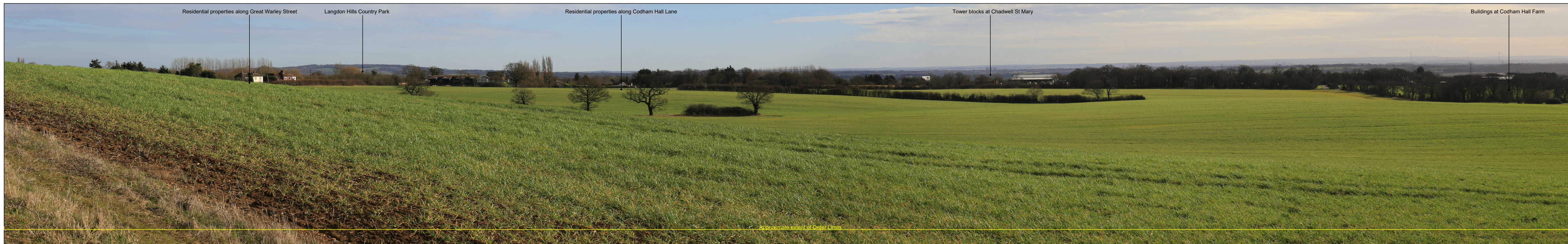
For location see Figure 7.16 - Visual Effects Drawing with Representative Viewpoint Locations		<b>Winter Viewpoint:</b> Date and Time:	N-Dep-RV-09 16/02/2022 10:27
Camera:	Canon EOS 6D MkII	FL, Max Aperture:	50mm, 1.75
Lens:	Canon EF 50mm f/1.8 STM	Viewpoint Ground Height:	188m AOD
		Viewpoint Grid Reference:	577481E, 159991N
		Distance to Order Limits:	1,175m
		View Direction (Centre of View):	NW



**LOWER THAMES CROSSING**  
5th Floor Beaufort House  
15 St Botolph Street  
London EC3A 7DT

Project	LOWER THAMES CROSSING
Drawing title	Figure 7.17 Representative Viewpoints - Winter Views Viewpoint N-Dep-RV-09 Sheet 1 of 1

Drawn	BB	Date - 05/08/2022	Status	S8	Revision	P01
Checked	HP	Date - 05/08/2022	Application Document No. TR010032/APP/6.2			
Approved	SK	Date - 05/08/2022	Drawing number HE540039-CJV-ELS-SZP_ZZ000000_Z-DR-LV-00411			



P01	S8	05/08/2022	First Issued	BB	HP	SK
Rev	Status	Rev. Date	Purpose of revision	Drawn	Chck'd	Apprv'd

For location see Figure 7.16 - Visual Effects Drawing with Representative Viewpoint Locations		<b>Winter Viewpoint:</b> Date and Time:	N-Dep-RV-10 17/02/2022 13:23
Camera:	Canon EOS 6D MkII	FL, Max Aperture:	50mm, 1.75
Lens:	Canon EF 50mm f/1.8 STM	Viewpoint Ground Height:	59m AOD
		Viewpoint Grid Reference:	558771E, 189857N
		Distance to Order Limits:	0m
		View Direction (Centre of View):	WSW



**LOWER THAMES CROSSING**  
5th Floor Beaufort House  
15 St Botolph Street  
London EC3A 7DT

Project: LOWER THAMES CROSSING  
Drawing title: Figure 7.17  
Representative Viewpoints - Winter Views  
Viewpoint N-Dep-RV-10  
Sheet 1 of 1

Drawn	BB	Date	- 05/08/2022	Status	S8	Revision	P01
Checked	HP	Date	- 05/08/2022	Application Document No. TR010032/APP/6.2			
Approved	SK	Date	- 05/08/2022	Drawing number			
HE540039-CJV-ELS-SZP_ZZ000000_Z-DR-LV-00412							



AREA LEFT INTENTIONALLY BLANK

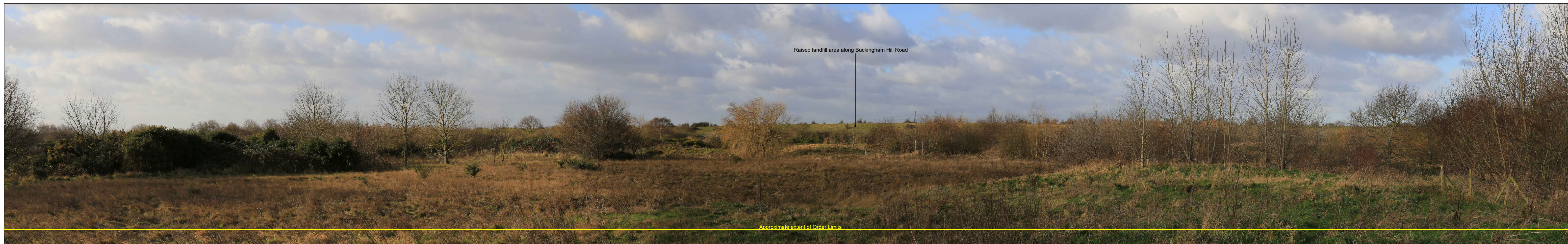
P01				S8				05/08/2022				First Issued				BB		HP		SK		For location see Figure 7.16 - Visual Effects Drawing with Representative Viewpoint Locations				<b>Winter Viewpoint:</b> Date and Time: N-Dep-RV-11 17/02/2022 12:31		FL, Max Aperture: 50mm, 1.75 Viewpoint Ground Height: 46m AOD Viewpoint Grid Reference: 559266E, 189334N		Distance to Order Limits: 0m View Direction (Centre of View): NW		Client 		<b>LOWER THAMES CROSSING</b> 5th Floor Beaufort House 15 St Botolph Street London EC3A 7DT		Project LOWER THAMES CROSSING		Drawing title Figure 7.17 Representative Viewpoints - Winter Views Viewpoint N-Dep-RV-11 Sheet 1 of 1		Drawn BB Checked HP Approved SK		Date - 05/08/2022 Date - 05/08/2022 Date - 05/08/2022		Status <b>S8</b>		Revision P01		Application Document No. TR010032/APP/6.2			
Rev	Status	Rev. Date	Purpose of revision	Drawn	Chck'd	Apprv'd	Drawing number <b>HE540039-CJV-ELS-SZP_ZZ000000_Z-DR-LV-00413</b>														HE540039-CJV-ELS-SZP_ZZ000000_Z-DR-LV-00413.dwg																														



AREA LEFT INTENTIONALLY BLANK

For location see Figure 7.16 - Visual Effects Drawing with Representative Viewpoint Locations <b>Winter Viewpoint:</b> N-Dep-RV-12 Date and Time: 17/02/2022 10:45				Camera: Canon EOS 6D MkII Lens: Canon EF 50mm f/1.8 STM		FL, Max Aperture: 50mm, 1.75 Viewpoint Ground Height: 22m AOD Viewpoint Grid Reference: 566552E, 180681N		Distance to Order Limits: 70m View Direction (Centre of View): ENE		Client 	<b>LOWER THAMES CROSSING</b> 5th Floor Beaufort House 15 St Botolph Street London EC3A 7DT		Project LOWER THAMES CROSSING Drawing title Figure 7.17 Representative Viewpoints - Winter Views Viewpoint N-Dep-RV-12 Sheet 1 of 1		Drawn BB Checked HP Approved SK		Date - 05/08/2022 Date - 05/08/2022 Date - 05/08/2022		Status S8 Application Document No. TR010032/APP/6.2		Revision P01	
P01	S8	05/08/2022	First Issued	BB	HP	SK	Drawing number HE540039-CJV-ELS-SZP_ZZ000000_Z-DR-LV-00414															
Rev	Status	Rev. Date	Purpose of revision	Drawn	Chck'd	Apprv'd	HE540039-CJV-ELS-SZP_ZZ000000_Z-DR-LV-00414.dwg															





AREA LEFT INTENTIONALLY BLANK

For location see Figure 7.16 - Visual Effects Drawing with Representative Viewpoint Locations				<b>Winter Viewpoint:</b> Date and Time: N-Dep-RV-13 17/02/2022 09:32		Distance to Order Limits: 120m			<b>LOWER THAMES CROSSING</b> 5th Floor Beaufort House 15 St Botolph Street London EC3A 7DT	Project LOWER THAMES CROSSING Drawing title Figure 7.17 Representative Viewpoints - Winter Views Viewpoint N-Dep-RV-13 Sheet 1 of 1	Drawn BB	Date - 05/08/2022	Status	Revision
Camera: Canon EOS 6D MkII Lens: Canon EF 50mm f/1.8 STM				FL, Max Aperture: 50mm, 1.75		View Direction (Centre of View): WSW					Checked HP	Date - 05/08/2022	S8	Application Document No. TR010032/APP/6.2
P01	S8	05/08/2022	First Issued	BB	HP	SK					Drawing number HE540039-CJV-ELS-SZP_ZZ000000_Z-DR-LV-00415			
Rev	Status	Rev. Date	Purpose of revision	Drawn	Chck'd	Apprv'd					HE540039-CJV-ELS-SZP_ZZ000000_Z-DR-LV-00415.dwg			

If you need help accessing this or any other National Highways information, please call **0300 123 5000** and we will help you.

© Crown copyright 2022.

You may re-use this information (not including logos) free of charge in any format or medium, under the terms of the Open Government Licence. To view this licence:

visit [www.nationalarchives.gov.uk/doc/open-government-licence/](http://www.nationalarchives.gov.uk/doc/open-government-licence/)

write to the **Information Policy Team, The National Archives, Kew, London TW9 4DU**, or email [psi@nationalarchives.gsi.gov.uk](mailto:psi@nationalarchives.gsi.gov.uk).

Mapping (where present): © Crown copyright and database rights 2022 OS 100030649. You are permitted to use this data solely to enable you to respond to, or interact with, the organisation that provided you with the data. You are not permitted to copy, sub-license, distribute or sell any of this data to third parties in any form.

If you have any enquiries about this publication email [info@nationalhighways.co.uk](mailto:info@nationalhighways.co.uk) or call **0300 123 5000\***.

\*Calls to 03 numbers cost no more than a national rate call to an 01 or 02 number and must count towards any inclusive minutes in the same way as 01 and 02 calls. These rules apply to calls from any type of line including mobile, BT, other fixed line or payphone. Calls may be recorded or monitored.

Printed on paper from well-managed forests and other controlled sources when issued directly by National Highways.

Registered office Bridge House, 1 Walnut Tree Close, Guildford GU1 4LZ

National Highways Company Limited registered in England and Wales number 09346363